

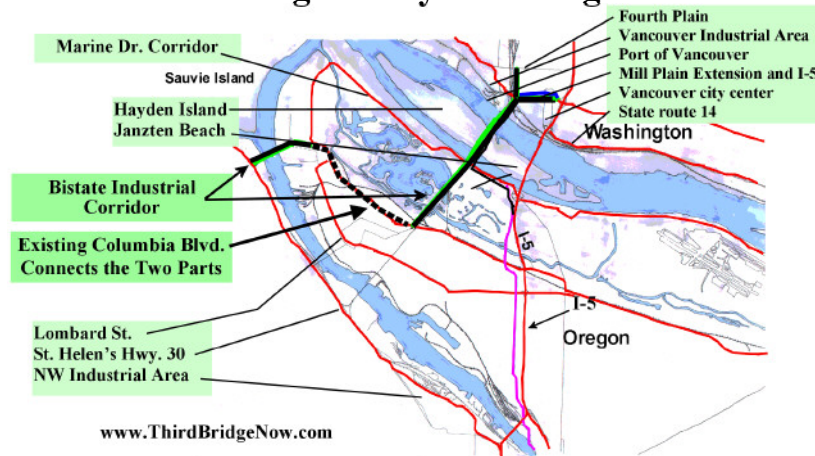
New Third Bridge has FAR less impact

Blue outline shows “Primary Area of Potential Impact” for Columbia River Crossing proposed project:

- Historic Ft, Vancouver
- A hundred or more homes
- Jantzen Beach
- High bridge “lands” far away from river
- Very Expensive, costs \$2-6 Billion

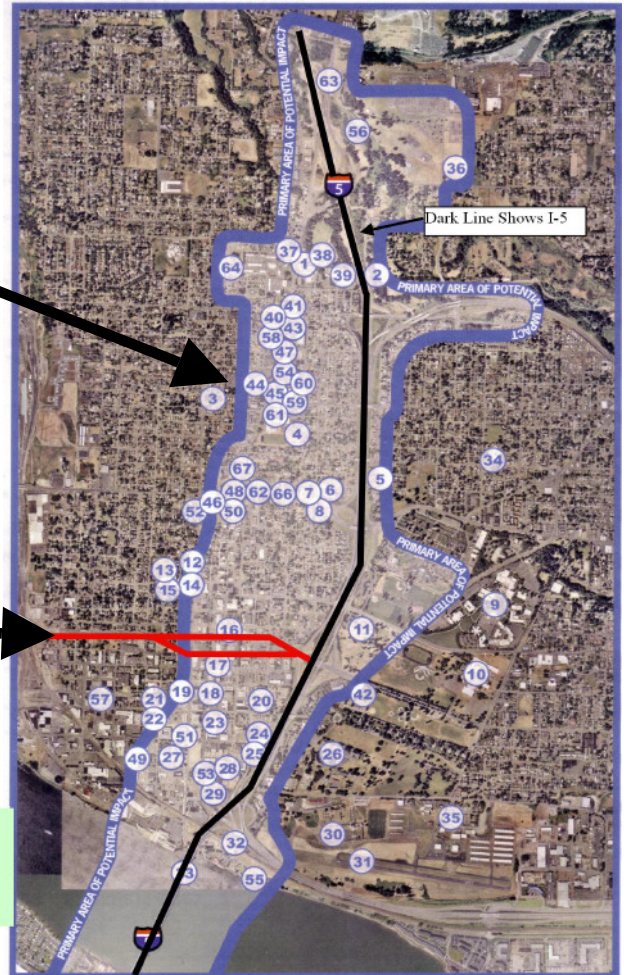
Potential impact of new Third Bridge Proposal is outlined

The new Third Bridge at the railroad crossing is away from neighborhoods:



www.ThirdBridgeNow.com

FOLD HERE FOR MAILING - see other side



Contact Senator Murray and tell her that you want the new Third Bridge studied.

The Marshall House
 1323 Officer's Row
 Vancouver, Washington 98661
 Phone: (360) 696-7797
 Fax: (360) 696-7798

ETA
 PMB#390
 8316 N. Lombard
 St. Johns, OR. 97203

Place
 Stamp
 Here

ETA
 PMB#390
 8316 N. Lombard
 St. Johns, OR. 97203